

The Scelzi Difference

Standard Features On Our Truck Bodies



- Three point latching system on all compartment doors.
- Gas shocks on open top compartment and vertical doors.
- Chrome Scelzi T-Bar handle latches with polished rivet-free stainless steel pockets and Galvanneal steel locking rods.
- Stainless steel tubing around wheel well openings.
- Six-inch step bumper.
- Tailgate - heavy duty self-leveling tailgate with 12 gauge diamond plate inner panel and 1/4" stainless steel end cap. Bracket is 10 gauge stainless steel.
- Doors - double panel door 18 gauge outer, 20 gauge inner laminated together.
- Shelves - 16 gauge galvanized with return flange curl. Shelf brackets are 12 gauge galvanized.
- And much more...

Annual Crane Inspections

Let Us Help You Comply With OSHA Crane Inspection Law



OSHA Crane Law requires all mobile cranes be inspected at regular intervals, and at least ONCE PER YEAR a licensed Crane Inspector must inspect your crane and document the findings. Let the Scelzi Experts help you. Call (559) 237-5541 for information or to schedule an inspection.

OSHA 29cfr 1926.1400
Cal OSHA Title 8 1613.6

NOW is the time to have your entire fleet inspected and certified!

Truck Body Parts Store

Our NEW Truck Body Parts Store offers a wider selection and larger inventory. Located at 2645 South Cherry Street in Fresno. Stop by or call us at (559) 237-5541 or Toll-Free at (800) 858-2883.



The Scelzi Legacy

A Commitment to Excellence for more than 37 years

From the time they were young men the Scelzi brothers dreamed of days spent designing, welding, and building things in their garage. From cars to wheels to trailers for boats, a commitment to Quality was something their father Monroe instilled deeply in his three sons. Today the Scelzi Legacy continues, and our commitment to Quality is stronger than ever.



Left to Right: Gary, Mike and Jim Scelzi

Scelzi custom truck bodies — American Ingenuity and Quality that has not been surpassed since 1979.



Scelzi Enterprises, Inc.
2286 East Date Avenue
Fresno, CA 93706
Office: (559) 237-5541



Don't Settle For Less Than A Scelzi !

www.SEINC.com
1-800-858-2883

Form SL-003 (Rev 7/2016)



SCELZI Truck Bodies



Product Review



SCELZI Truck Bodies: American Ingenuity and Craftsmanship



Premium Quality Water Trucks



Water Truck Features



Flatbed/Platform



Flatbed/Platform with Side Racks (aluminum shown here)



Dump Body



Crown RV "Hauler" Body

Every SCELZI Truck Body Is Precision Engineered To Match The Professional In The Driver's Seat



Service Body - Signature Series Premium



Contractor Body



Service Body - Crown Series Standard



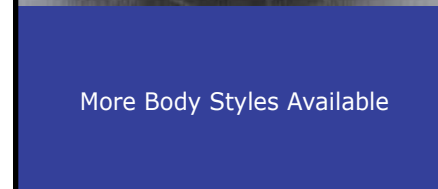
Combo Body



Service Body - Contour Style Elite



Welder/Mechanics Body



More Body Styles Available

Photos shown here may contain slight variations from "standard" Scelzi truck bodies. Verify your specifications when you order.